

**CARDEV**

OIL FILTRATION & COOLANT HANDLING



Product Datasheet

## SDU-H350UW-S Subsea By-pass Oil Filter

- Removes free and dissolved water contamination
- Removes microparticles and salt
- Increases system reliability
- Prevents system corrosion
- Reduces component wear
- Extends oil life and generates CO<sub>2</sub> savings
- Reduces operating costs



## Results

- Up to 99.9% water removed (both free and dissolved water)
- Oil cleanliness maintained at "better than new\*" levels



Before After

\*(ISO 4406: 13/11/08, NAS Class: 2)

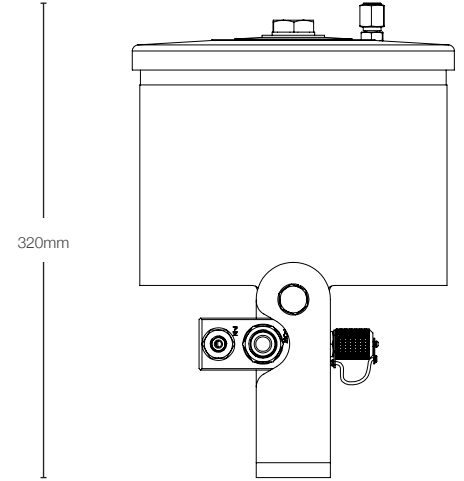
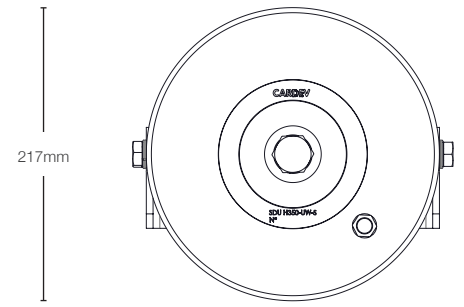
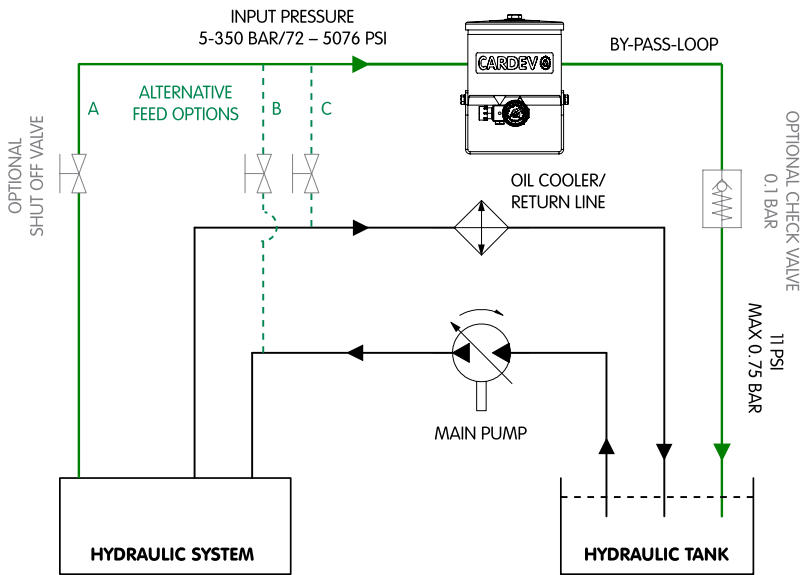
## Features

- Robust construction - hard anodised housing and 316 grade stainless steel hardware
- Input pressure 5-350 Bar
- Flow through filter controlled at 2 litres per minute
- Air bleed valve - eliminate air after a filter change
- Sample point - allows connection to ETL ConMon particle monitors / oil sampling

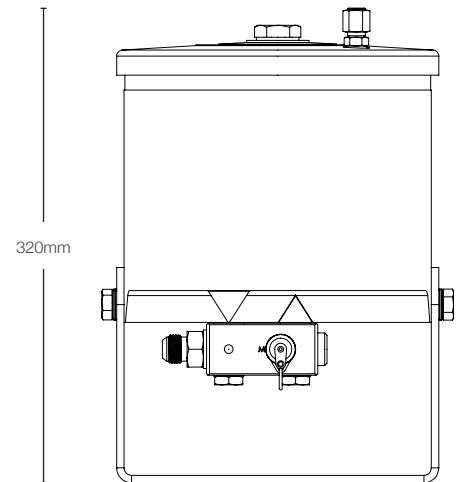
## Application Examples

- ROVs
- Winches / cranes on deck
- LARS
- HPU's on / under deck

## Installation Example



217mm



237mm

Recommended installation	Flow rate through filter (l/h) **	Dimensions (mm)			Connections		Weight (kg)	Filter cartridge type	Retention capacity (per filter)	
		H	W	L	Inlet	Outlet			≤ 2.5 kg Dirt	≤ 0.78 Litres of Water
BY-PASS ONLY. Max. 350 bar inlet and 0.75 bar back pressure. Systems up to 400 litres	120	320	237	217	7/16-UNF - 20TPI JIC (Male) -4 JIC	3/4-UNF - 16TPI JIC (Male) -8 JIC	9.4 (approx. 4kg in water)	SDFC	≤ 2.5 kg Dirt	≤ 0.78 Litres of Water
					Valve block inlet port M12 x 1.5 (f)	Valve block outlet port M18 x 1.5 (f)				

\*\*flow rates based on ISO 46 oil @ 40°C

Environmental Technologies Limited  
Grimbald Crag Road Knaresborough HG5 8PY United Kingdom  
T +44 (0)1423 522911 F +44 (0)1423 530043 E sales@env-t.com  
www.env-t.com

The specification and photography above is for reference only and may be subject to change.  
ETL, ETL Flow, ETL ConMon are trademarks of ETL Ltd. © 2015 Environmental Technologies Ltd. All rights reserved.

V09-15-05-15-ENG

