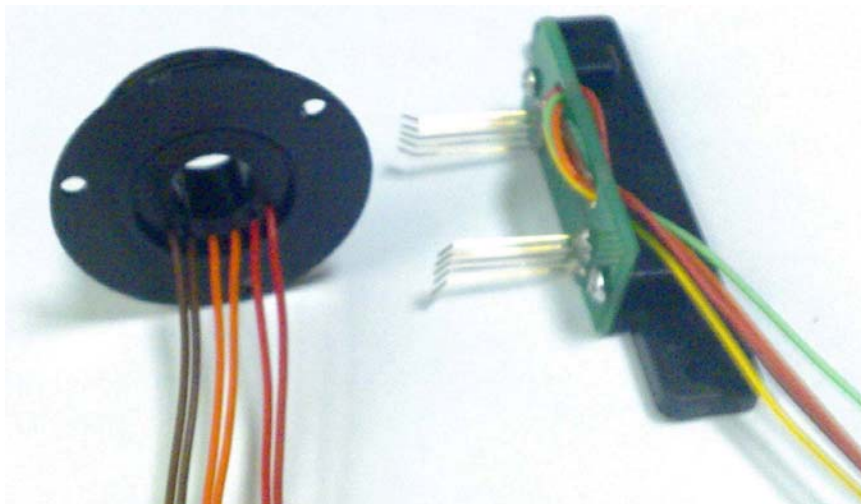


Miniature Slip Ring Separates with Bore Through



Model: SRK008A – Slip Ring
SRK008B – Brush Block

- ◆ Adopt separate indicates design, an individual rotor/brush block combination
- ◆ Adopt noble material to pledge osculant reliability
- ◆ Suffice the un-limit revolving video and the digital signals transmission of 360 degrees completely
- ◆ Longstanding using life
- ◆ Can be customised for customer need the produce



Hangzhou Prosper Electric Co.,Ltd

Http: // www.hzqs.com

[Mailto:sales@hzqs.com](mailto:sales@hzqs.com)

Address: 1-1,the third jianhua sanjak,gensan east RD,hangzhou310021,P.R.China

Tel: 0086-571-8649 6781 8649 6782 8649 6783

Fax: 0086-571-8649 6785

Description

A slip ring can be used in any electromechanical system that requires unrestrained, continuous rotation while transmitting power and/or data from a stationary to a rotating structure.

A slip ring is also called a rotary electrical interface, commutator, collector, swivel or a rotary joint.

Sometimes a self contained “capsule” is not practical due to size constraints or cost limitations, and a “separate” is the solution. The term separate indicates an individual rotor/brush block combination.

If a separate rotor/stator approach is best for your application, consider our SRK series.

The SRK008 slip ring separate has 5 circuits and features a 8mm unobstructed bore through the center that provides routing space for hydraulics, pneumatics, or for a concentric shaft mount.

Typical applications

This separate assembly provides high speed performance and an unobstructed bore through the center of the unit. It is successfully performing in instrumentation applications where miniaturization is critical, such as:

- Aircraft cockpit operation
- Sputtering machines for the manufacture of integrated circuits
- Custom machinery
- OEM machinery
- Power tools

Electrical data

Parameter	Unit
Ring number	5 rings
Volts (test)	500VRMS
Current	2A/ring
Lead size	Adopt AWG26 Color coded, FPE insulated lead wires
Lead length	The rings 180mm, The brush 400mm Or according to require
Dynamic contact Resistance	$\leq 15 \text{ m}\Omega/\text{ring}$

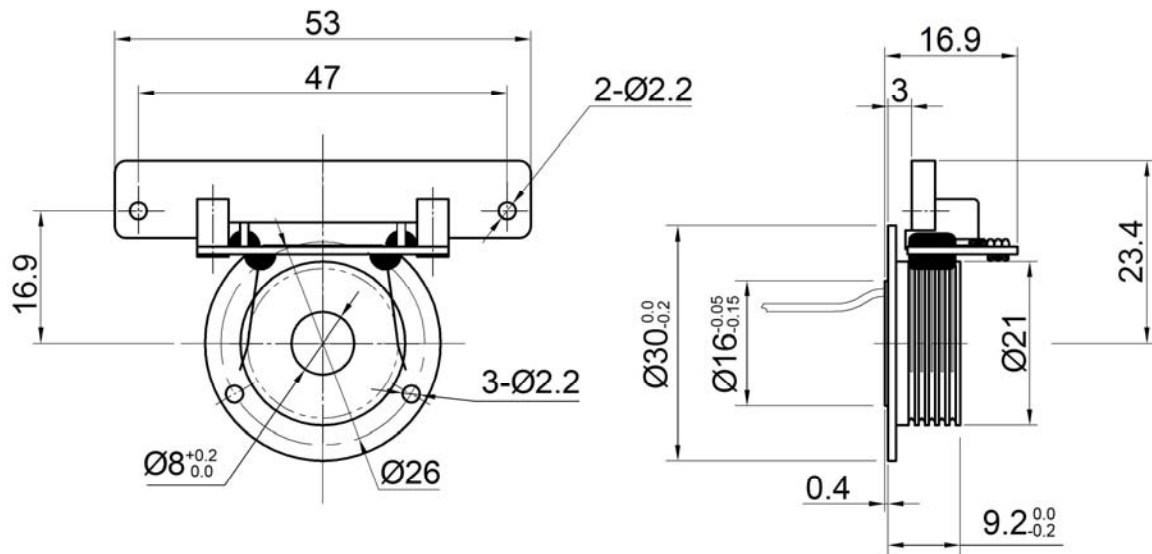
Mechanical data

Parameter	Unit
Operate Speed	0-100 rpm
The ring O.D.	21mm
Ring Pitch	1.3mm
Bore	$8^{+0.2}_0 \text{ mm}$
Ring Groove Geometry:	Raised Barrier, 90° V-Groove
Contact material (gold-gold)	The rings adopt multilayer noble metal alloy for plating dispose The brush adopt noble metal alloy spring material
Temperature range	-20°C-65°C

Lead Wire Color Codes

Ring #	The rings Color Code	The brush Color Code
#1	RED、RED	GRN
#2	ORN	YEL
#3	ORN	ORN
#4	BRN	RED
#5	BRN	BRN

Outline drawing



Hangzhou Prosper Electric Co.,Ltd

Http: // www.hzqs.com

[Mailto:sales@hzqs.com](mailto:sales@hzqs.com)

Address: 1-1,the third jianhua sanjak,gensan east RD,hangzhou310021,P.R.China

Tel: 0086-571-8649 6781 8649 6782 8649 6783

Fax: 0086-571-8649 6785